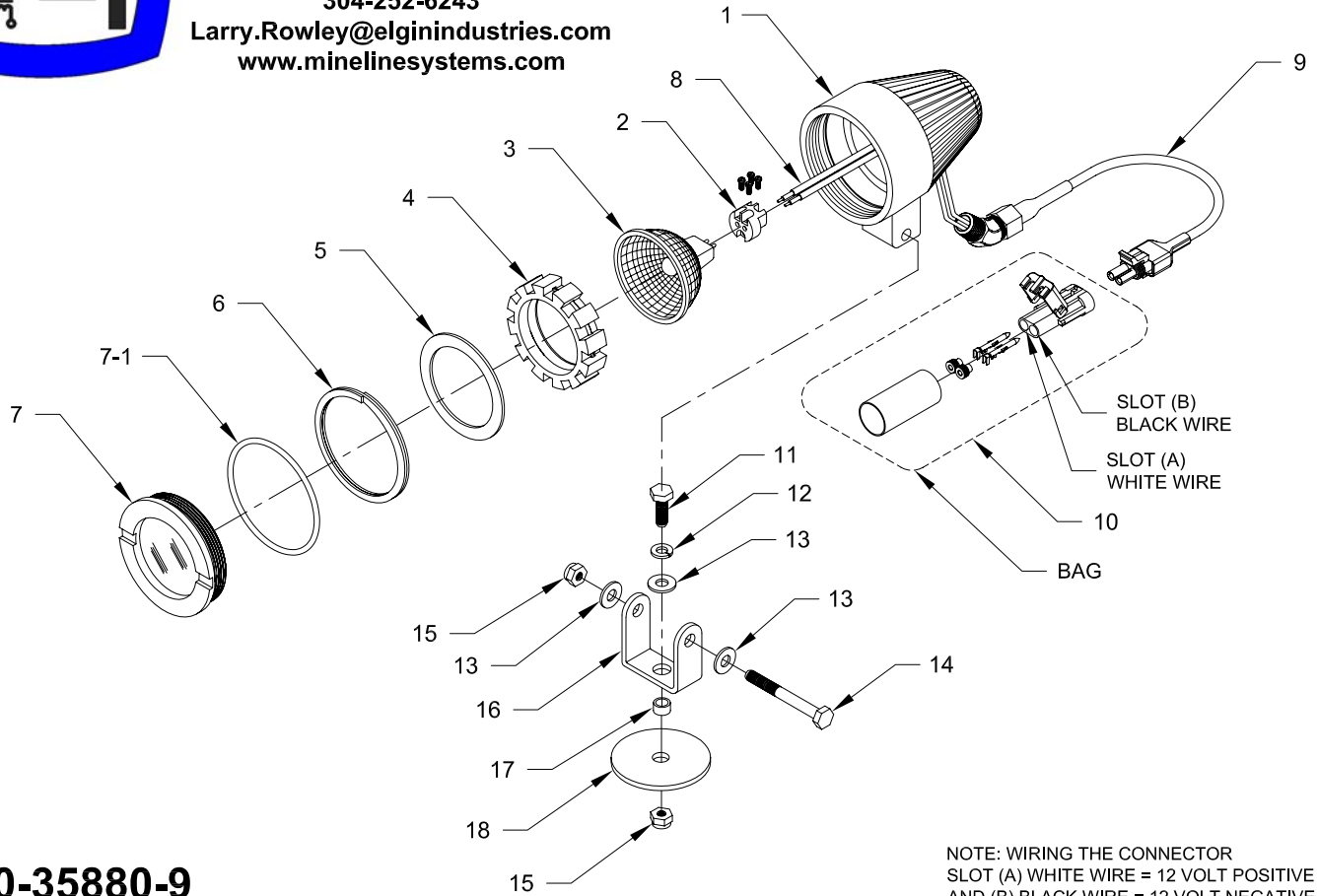




Mine Lighting Systems
Mining Controls Inc.
 P.O. Box 1141
 Beckley, WV 25873
 304-252-6243
 Larry.Rowley@elginindustries.com
 www.minelinesystems.com

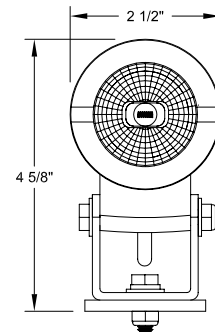


7030-35880-9

NOTE: WIRING THE CONNECTOR
 SLOT (A) WHITE WIRE = 12 VOLT POSITIVE
 AND (B) BLACK WIRE = 12 VOLT NEGATIVE

**T50 Standard Swivel Mount Head Light With Inline Screw Socket, 12 V.
 AC\DC 50 Watt Super Blue Flood Lamp And Weather Pak Pigtail Connector**

| Item | Qty. | Part Number | Description |
|------|-------|---------------|------------------------------|
| 1 | 1 | 2010-35771-2 | Alum. Housing |
| 2 | 1 | 2020-32773-3 | Inline Screw Socket |
| 3 | 1 | 2021-29730-24 | Lamp 50 Watt 12 Volt Flood |
| 4 | 1 | 3018-33571-3 | Lamp Holder |
| 5 | 1 | 1031-33578 | Black Ring |
| 6 | 1 | 3015-33835 | Snap Ring |
| 7-1 | 1 | 2019-29731-6 | O Ring |
| 7 | 1 | 2010-34128 | Clear Lens Assembly |
| 8 | 1 FT. | 1051-33726 | Sleeving |
| 9 | 1 | 1037-34348-51 | Weather Pak Pigtail assembly |
| 10 | 1 | 1037-34348-6 | Weather Pak Receptacle Kit |
| 11 | 1 | 1041-50003-3 | Bolt 1/4-20 X 1 Hex Head |
| 12 | 1 | 1041-50004 | 1/4" Lock Washer |
| 13 | 3 | 1041-50026 | 1/4" Flat Washer |
| 14 | 1 | 1041-50003-18 | Bolt 1/4-20 X 2-1/4 Hex Head |
| 15 | 2 | 1041-50024-2 | Nylon Lock Nut 1/4-20 Hex |
| 16 | 1 | 2022-33620-1 | "U" Mounting Bracket |
| 17 | 1 | 2010-33323-1 | Spacer Tube |
| 18 | 1 | 3018-33620-3 | Base Pad |



FIXTURE WEIGHT 2 LB. MAX.

