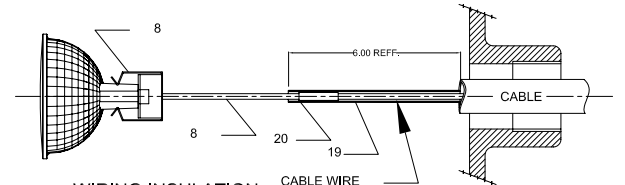
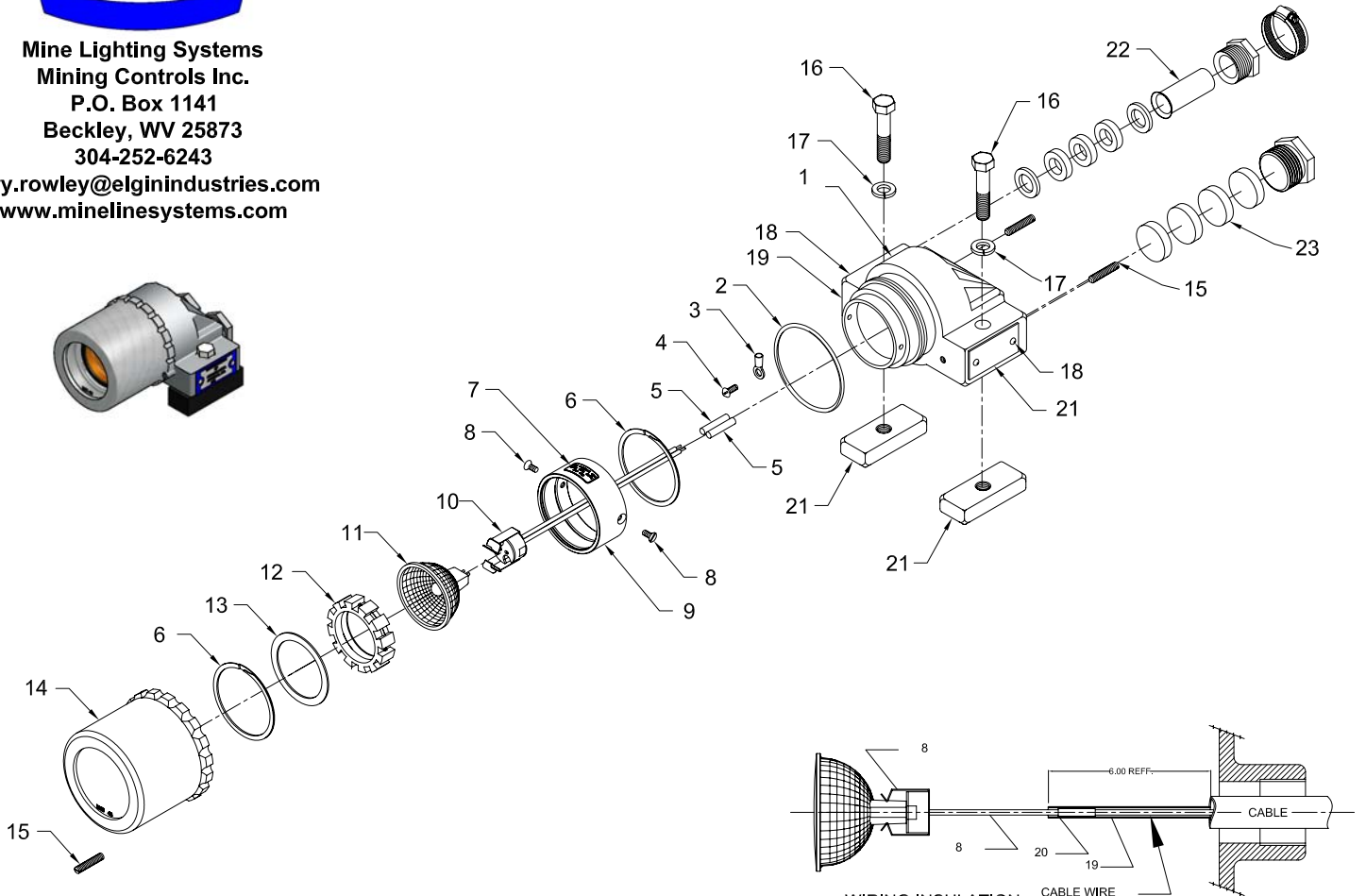




Mine Lighting Systems  
Mining Controls Inc.  
P.O. Box 1141  
Beckley, WV 25873  
304-252-6243

[larry.rowley@elginindustries.com](mailto:larry.rowley@elginindustries.com)  
[www.minelinesystems.com](http://www.minelinesystems.com)



WIRING INSULATION  
USE THE FIBERGLASS SLEEVING ITEM 19.  
TO ISOLATE AND INSULATE THE INCOMING CABLE WIRE.

## 7015-31678-RM

Item	Qty.	Part Number	Description
1	1	2010-31678H-A	HOUSING ALUMINUM
2	1	2019-31137-1	O-RING
3	1	1035-20301-2	RING TERMINAL #10
4	1	1041-50002-15	SCREW 8-32 X 3/8" ROUND HEAD
5	2	1035-20304-1	BUTT SPLICE FOR 14-16 AWG WIRE
6	2	3015-33835	SNAP RING
7	1	1044-32805	BULB WARNING LABEL
8	2	1041-50002-17	SCREW 8-32 X 3/8" Flat Head
9	1	2010-31678-L2	LAMP HOLDER
10	1	2020-29729-1	SOCKET WITH CLIP
11	1	2021-29730	12 Volt 50 Watt 38 DEG Flood Lamp
12	1	3018-33571-3	STAR LAMP HOLDER
13	1	1031-33578	LAMP RING
14	1	2013-35120-1A	SHORT ALUM LENS RING ASSEMBLY
15	3	1041-50009-3	SET SCREW 1/4-20 X 1"
16	2	1041-50006-7	BOLT 3/8-16 X 2" HEX HEAD
17	2	1041-50008	LOCK WASHER 3/8
18	4	1041-50005	DRIVE SCREW 4 X 3/16
19	1	1044-20038	PA TAG
20	1	1044-31678-2	CERTIFICATION TAG
21	2	2022-32974	MOUNTING FOOT
22	1	7017-2031-12	Packing Gland Assembly 3/4" ST .510-.550
23	1	2024-20057-1	Steel Plug 1 1/8"-12

### OPERATING SPECIFICATION

FIXTURE VOLTAGE 12 or VOLTS AC or DC  
FIXTURE WEIGHT 5 LB FOR ALUM

