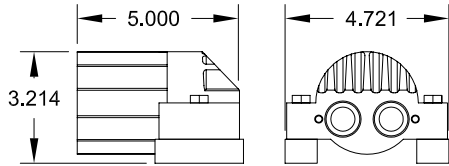


Tec. Data Sheet Model MCI 50-XP Explosion Proof With Battery Capacity Meter (LED)

BATTERY CAPACITY & HOUR METER FIXTURE ORDER INFORMATION	
FIXTURE	ORDERING PART NUMBER
	ALUMINUM HOUSING ITEM 13
STANDARD BATTERY CAPACITY & HOUR METER ASSEMBLY	7015-31678-G2
BATTERY CAPACITY & HOUR METER WITH HEAVY DUTY GUARD ITEM 15	7015-31678-4G2



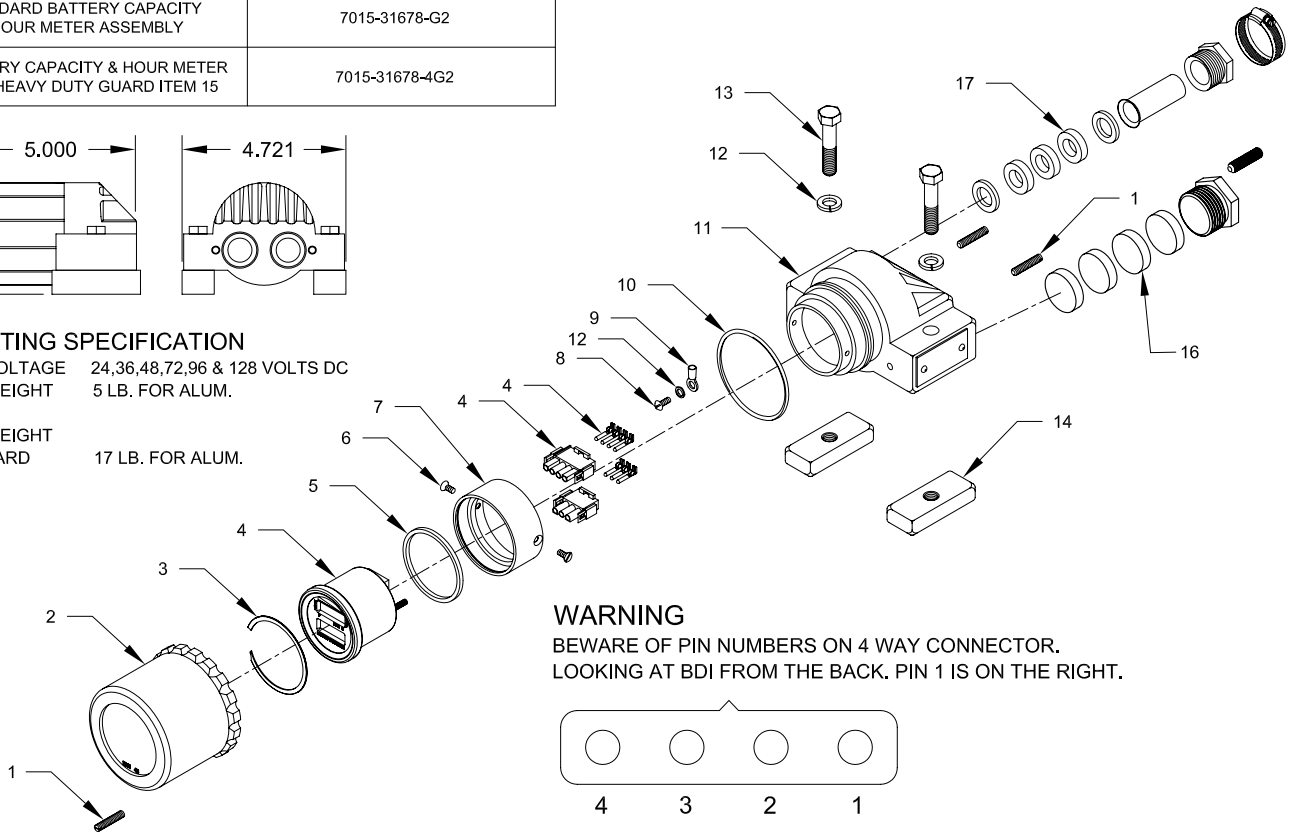
OPERATING SPECIFICATION

METER VOLTAGE 24,36,48,72,96 & 128 VOLTS DC

METER WEIGHT 5 LB. FOR ALUM.

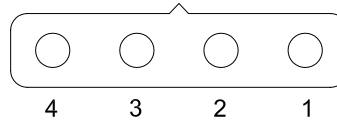
METER WEIGHT WITH GUARD

17 LB. FOR ALUM.



WARNING

BEWARE OF PIN NUMBERS ON 4 WAY CONNECTOR.
LOOKING AT BDI FROM THE BACK. PIN 1 IS ON THE RIGHT.



THEREFORE PIN 2 = POSITIVE BATTERY
PIN 3 = NEGATIVE BATTERY

THIS WIRING IS FOR THE VOLTAGES: 24,36,48,72,96 & 128 VOLTRS.
FOR 80 & 120 VOLTS ONLY: USE A JUMPER FROM PIN 1 TO PIN 4.

NOTE: TO PREVENT DAMAGE TO METERS FOLLOW THE ABOVE INSTRUCTIONS. FAILURE TO DO SO WILL RESULT IN SHORTING OUT THE METER.

PA Approved 1246-94
MSHA Approved XP-3938-1

Model MCI 50-XP Battery Capacity & Hour Meter Assembly With Out Meter

Item	Qty.	Part Number	Description
1	3	1041-50009-3	1/4" - 20 X 1" Set Screw
2	1	2013-35120-1A	Alum. Lens Housing Assembly
3	1	3015-33985	Stainless Steel Retainer Ring
4	0	1019-33984-2	Battery Capacity Meter
5	1	3018-33739-2	Meter Cushion Ring
6	2	1041-50002-19	8 - 32 X 1/4" Flat Head Screw
7	1	2010-31678-L3	Meter Retainer
8	1	1041-50002-15	8 - 32 X 3/8" Round Head Screw
9	1	1035-20301-2	Ring Terminal Lug

Item	Qty.	Part Number	Description
10	1	2019-31137-1	"O" Ring
11	1	2010-31678H-A	Alum. Housing
12	3	1041-50008	3/8" Lock Washer
13	2	1041-50006-7	3/8" - 16 X 2" Hex Bolt
14	2	2022-32974	Mounting Foot
15	0	2022-32439	Guard Assembly-Sold Separatley
16	1	2024-20057-1SA	Steel Plug 1 1/8" - 12
17	0	7017-20501-G-030	Packing Gland Assy With Grommet

www.minelightsystems.com
Mining Controls Inc. 304-252-6243