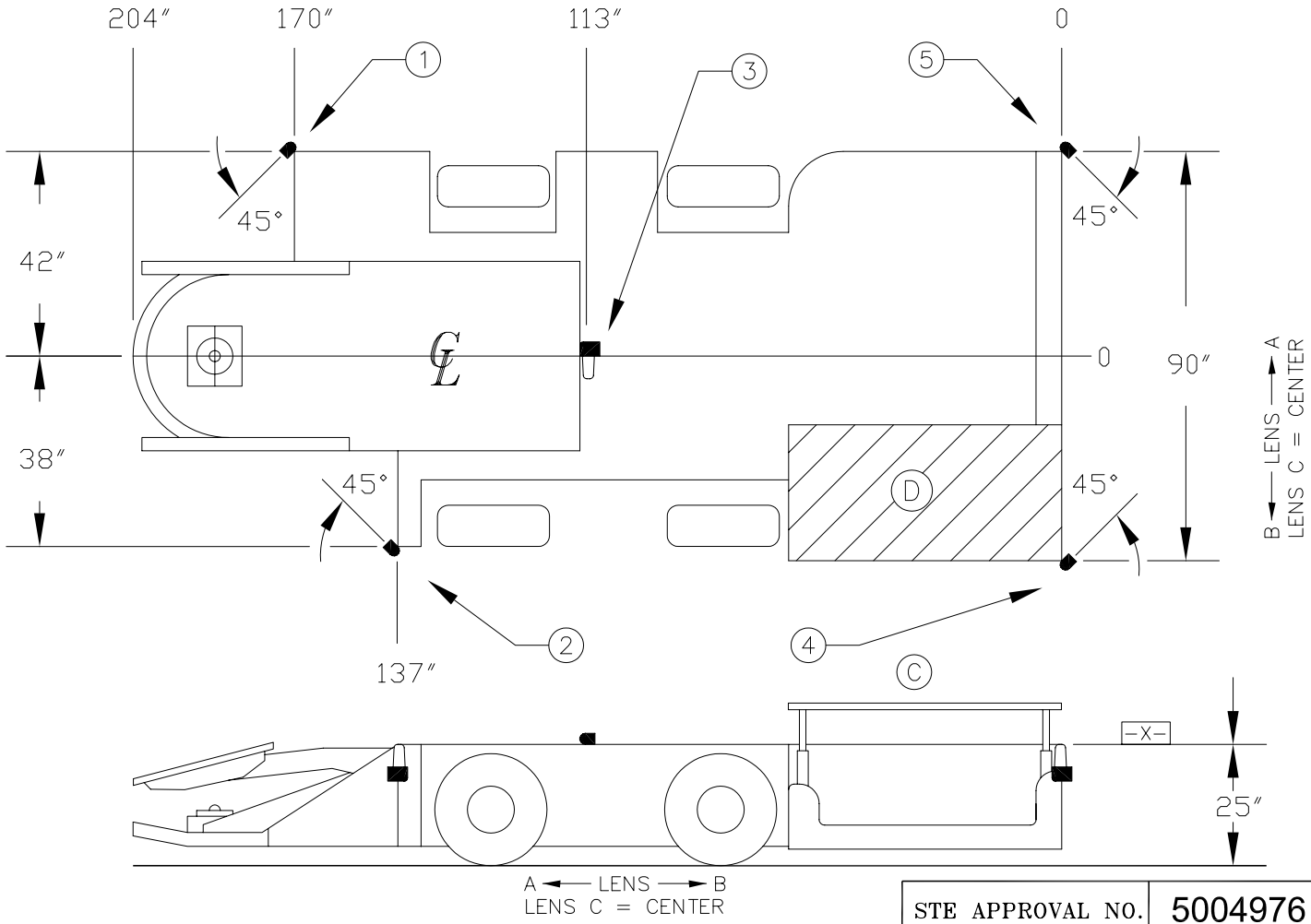


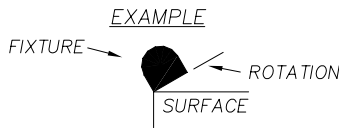
FACE



DIMENSIONAL INFORMATION AND TERMS:

ALL DIMENSIONS ARE TO THE CENTER OF THE FIXTURE, UNLESS THE FIXTURE IS MOUNTED TO A DIMENSIONED SURFACE.

- TF - FIXTURE ROTATION TO THE FACE
- LR - FIXTURE ROTATION TO THE LEFT RIB
- RR - FIXTURE ROTATION TO THE RIGHT RIB
- TB - FIXTURE ROTATION TO THE BACK
- UP - FIXTURE ROTATION TO THE ROOF



- NOTES:**
- ALL FIXTURES WITH THE EXCEPTION OF HEAD LIGHTS ARE EQUIPPED WITH STEEL GUARDS.
 - HEAD LIGHTS ARE PROTECTED BY 1/8" MIN. STEEL.
 - THIS STE SHOWS THE MINIMUM LIGHTS REQUIRED. ADDITIONAL LIGHTS CAN BE ADDED TO MEET THE CUSTOMERS NEEDS.

STE APPROVAL NO. **5004976**

MACHINE MODEL:

LTDO

TOLERANCE:

MACHINE MODEL VARIATIONS ±6"

LIGHT PLACEMENT ±3" LINEAR
±5" ANGULAR

VOLTAGE AT FIXTURE ±5 %
OF RATED BULB VOLTAGE.

D	OPERATOR STA.	REMOTE CONTROL OPTIONAL					
C	CANOPY	CANOPY OPTIONAL WHEN USING REMOTE CONTROL OR IN COAL LESS THAN 42"					
5	27434-LP	20	FL.			-8"	LR.
4	27434-LP	20	FL.			-8"	RR.
3	27434-LP	20	FL.			0"	TB.
2	27434-LP	20	FL.			-8"	RR.
1	27434-LP	20	FL.			-8"	LR.
ITEM	MODEL	WATTS	TYPE	LENS A	LENS C	LENS B	PACKING GLAND LOCATION
		LAMP		DIFFUSION			

MINING CONTROLS INCORPORATED
P.O. BOX 1141 BECKLEY, WV 25802

DO NOT CHANGE WITHOUT "MSHA" APPROVAL

ENTRY SIZE
6' X NA

DRAWN BY **RAJ** DATE DRAWN **11-30-92**

APPROVED BY DATE APPROVED

TITLE
FLETCHER ROOF BOLTER

DRAWING NUMBER **921010** REV. **A**