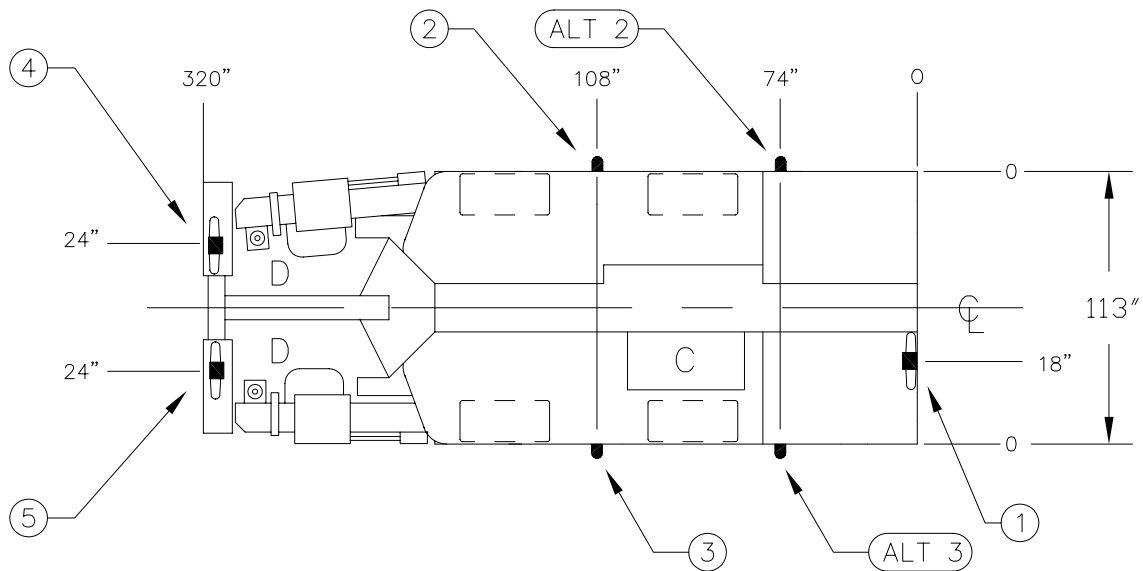
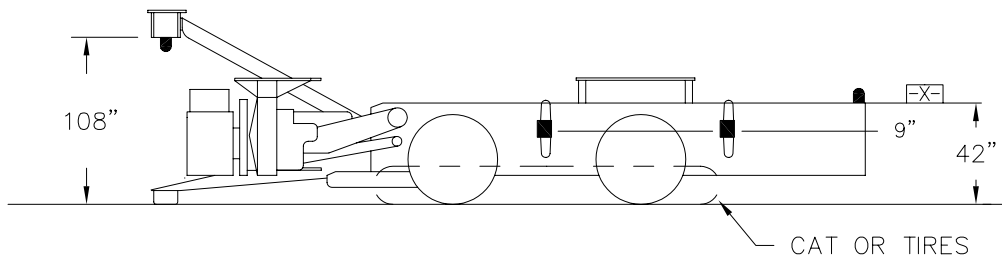


FACE



B - LENS -> A
LENS C = CENTER



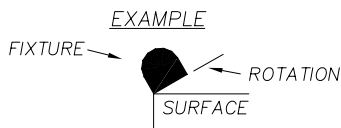
A - LENS -> B
LENS C = CENTER

STE APPROVAL NO. 5004871-01

DIMENSIONAL INFORMATION AND TERMS:

ALL DIMENSIONS ARE TO THE CENTER OF THE FIXTURE, UNLESS THE FIXTURE IS MOUNTED TO A DIMENSIONED SURFACE.

- TF - FIXTURE ROTATION TO THE FACE
- LR - FIXTURE ROTATION TO THE LEFT RIB
- RR - FIXTURE ROTATION TO THE RIGHT RIB
- TB - FIXTURE ROTATION TO THE BACK
- UP - FIXTURE ROTATION TO THE ROOF



NOTES:

1. ALL FIXTURES WITH THE EXCEPTION OF HEAD LIGHTS ARE EQUIPPED WITH STEEL GUARDS.
2. HEAD LIGHTS ARE PROTECTED BY 1/8" MIN. STEEL.
3. THIS STE SHOWS THE MINIMUM LIGHTS REQUIRED. ADDITIONAL LIGHTS CAN BE ADDED TO MEET THE CUSTOMERS NEEDS.

MACHINE MODEL:

HDDR

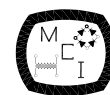
TOLERANCE:

MACHINE MODEL VARIATIONS ±6"

LIGHT PLACEMENT ±3" LINEAR
±5° ANGULAR

VOLTAGE AT FIXTURE ±5 %
OF RATED BULB VOLTAGE.

D	OPERATOR STA.	REMOTE CONTROL OPTIONAL						
C	CANOPY	CANOPY OPTIONAL WHEN USING REMOTE CONTROL OR IN COAL LESS THAN 42"						
5	27434-LP2	20	FL				SEE DIM	TB
4	27434-LP2	20	FL				SEE DIM	TB
ALT 3	27434-LP2	20	FL				-9"	RR
4	27434-LP2	20	FL				-9"	RR
ALT 2	27434-LP2	20	FL				-9"	LR
2	27434-LP2	20	FL				-9"	LR
1	27434-LP2	20	FL				0"	TF
ITEM	MODEL	LAMP		LENS			LIGHT LOCATION FROM SURFACE -X- DIM ABOVE (+) DIM BELOW (-)	PACKING GLAND LOCATION
		WATTS	TYPE	A	C	B		



MINING CONTROLS INCORPORATED

P.O. BOX 1141 BECKLEY, WV 25802

DO NOT CHANGE WITHOUT "MSHA" APPROVAL

ENTRY SIZE
8' X 20'

DRAWN BY LWR DATE DRAWN 12-10-91

APPROVED BY DATE APPROVED

TITLE
FLETCHER BOLTER

DRAWING NUMBER 911204 REV. A