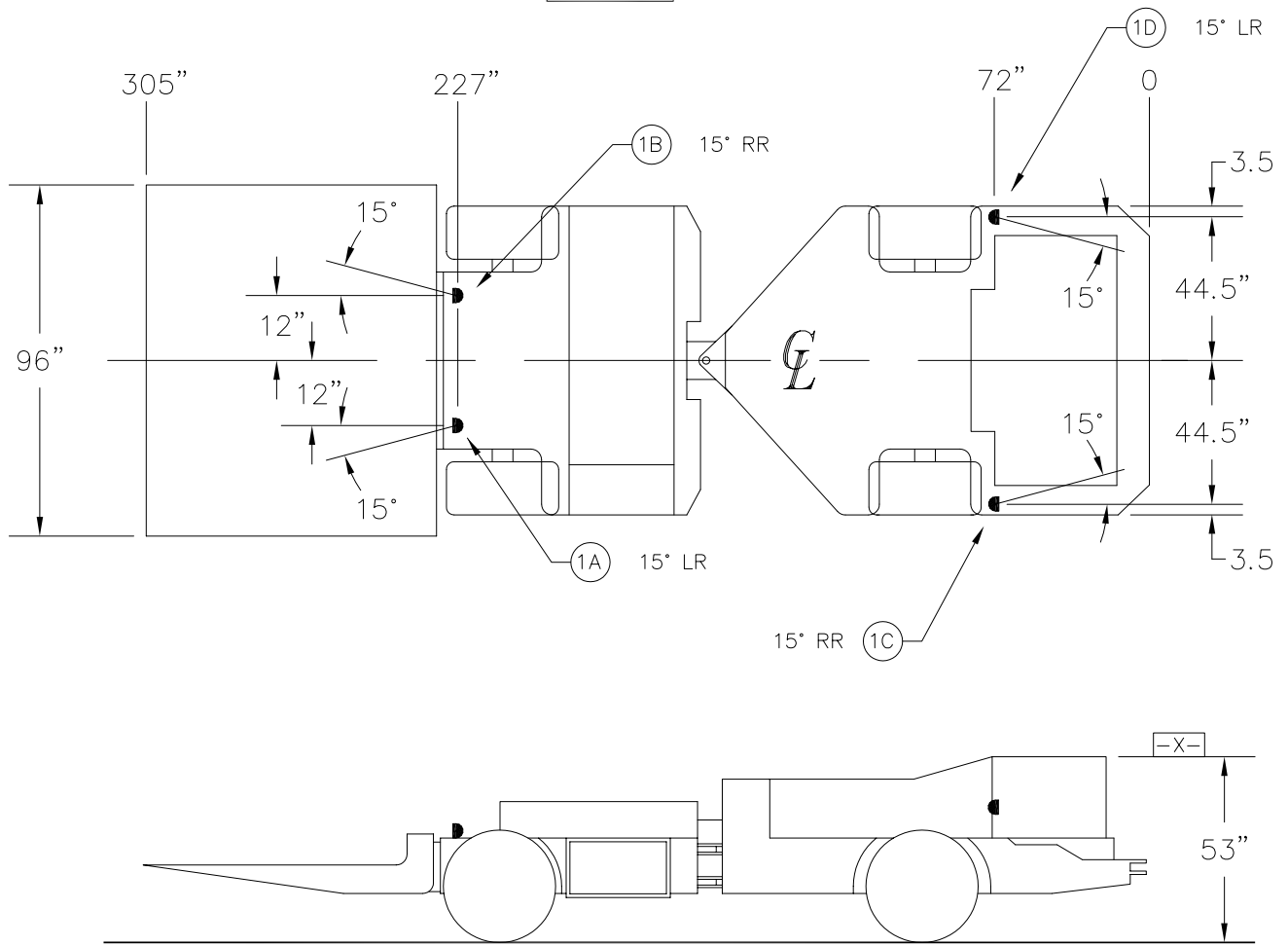


RIGHT RIB

FACE



MACH. MODEL	601, 602, 603, 604, & 605	STE APPROVAL NO.	5004157-01
-------------	---------------------------	------------------	------------

DIMENSIONAL INFORMATION AND TERMS:
 ALL DIMENSIONS ARE TO THE CENTER OF THE FIXTURE, UNLESS THE FIXTURE IS MOUNTED TO A DIMENSIONED SURFACE.
 TF - FIXTURE ROTATION TO THE FACE
 LR - FIXTURE ROTATION TO THE LEFT RIB
 RR - FIXTURE ROTATION TO THE RIGHT RIB
 TB - FIXTURE ROTATION TO THE BACK
 UP - FIXTURE ROTATION TO THE ROOF

EXAMPLE
 27434-LP
 27434-LP2
 FIXTURE

ROTATION SURFACE

TOLERANCE:
 MACHINE MODEL VARIATIONS ±6"
 LIGHT PLACEMENT ±3" LINEAR
 ±5° ANGULAR
 VOLTAGE AT FIXTURE ±5 %
 OF RATED BULB VOLTAGE.

HEAD LIGHT	AREA LIGHTS	
ITEM 1	ITEM 2	ITEM 3
30000 MCI50XP 20043	27434-LP	27434-LP2

NOTES:
 1. ALL FIXTURES WITH THE EXCEPTION OF HEAD LIGHTS ARE EQUIPPED WITH STEEL GUARDS.
 2. HEAD LIGHTS ARE PROTECTED BY 1/8" STEEL.
 3. THIS SHEET SHOWS THE MINIMUM LIGHTS REQUIRED. ADDITIONAL LIGHTS CAN BE ADDED TO MEET CUSTOMERS NEEDS.
 4. WHEN FROSTED GLOBES ARE USED CLEAR GLOBES ARE OPTIONAL.

D	OPERATOR STA.	REMOTE CONTROL OPTIONAL		DO NOT CHANGE WITHOUT "MSHA" APPROVAL							
C	CANOPY	CANOPY OPTIONAL WHEN USING REMOTE CONTROL OR IN COAL LESS THAN 42"			ENTRY SIZE OF MACHINE SIZE						
		3	27434-LP2	23 W. EL (Compact Fluor.)	3843-2	.730					
				20 W. EL (Compact Fluor.)	3843-2	.730					
				20 W. EL (Compact Fluor.)	3843-0,-1	.730					
		2	27434-LP	23 W. EL (Compact Fluor.)	3843-2	.730					
				20 W. EL (Compact Fluor.)	3843-2	.730					
				20 W. EL (Compact Fluor.)	3843-0,-1	.730					
1D	TF.		-9"								
1C	TF.		-9"								
1B	TB.		-17.5"								
1A	TB.		-17.5"								
ITEM & LOCATION	GLOBE TYPE	GLAND LOCATION	GLOBE LOCATION	LIGHT LOCATION FROM SURFACE -X- DIM ABOVE (+) DIM BELOW (-)	ITEM	MODEL	BULB WATTS / TYPE	X/P NO.	MAX. CABLE RANGE	MACHINE MANUFACTURE	MACHINE TYPE
										INGERSOLL RAND	TRACTOR
										Mining Controls Incorporated	

LIGHT FIXTURE INFORMATION				DRAWN BY	DATE DRAWN	APPROVED BY	DRAWING NUMBER	REV.
				RAJ	9-28-94		940917	A